
**ETCS Reverse Engineering
Case Study 1:
Fender Assembly**



ETCS

Reverse Engineering Scanning Process

- Scanning of Assembly & individual parts
- Digital assembly of scan data in assembled position.
- Surface modeling from individual scans in Body (assembled) position.
- Translation of final model customer CAD system: CATIA V4/V5, UG, ProE Etc.

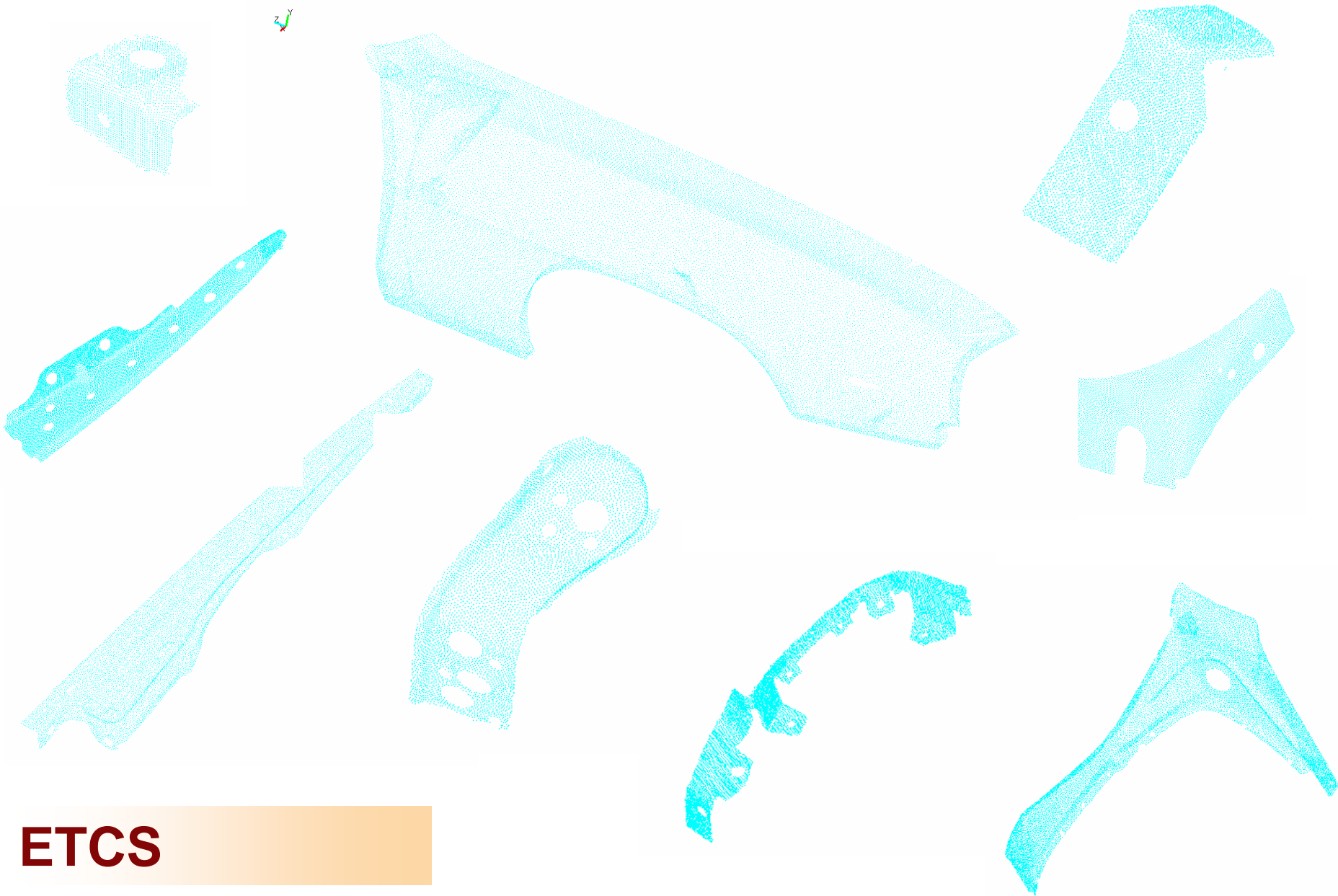
Assembly and Individual parts



ETCS

6710 Sterling Dr N, Sterling Heights, Mi 48312

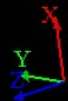
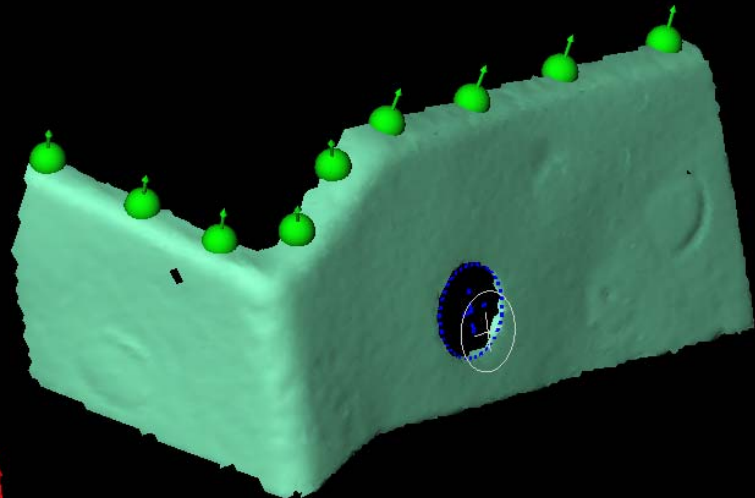
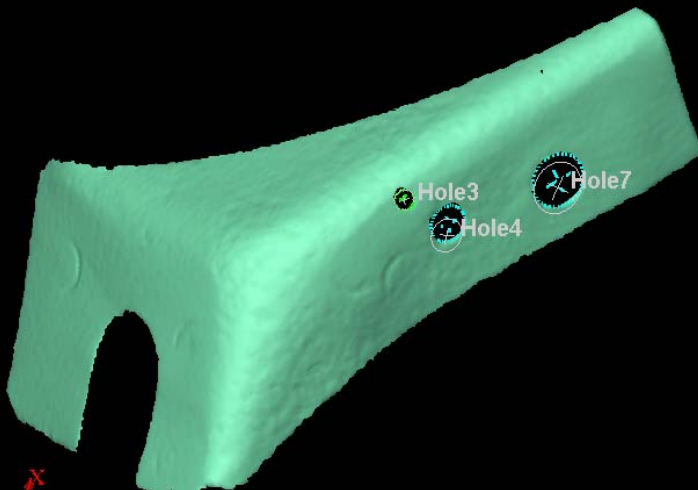
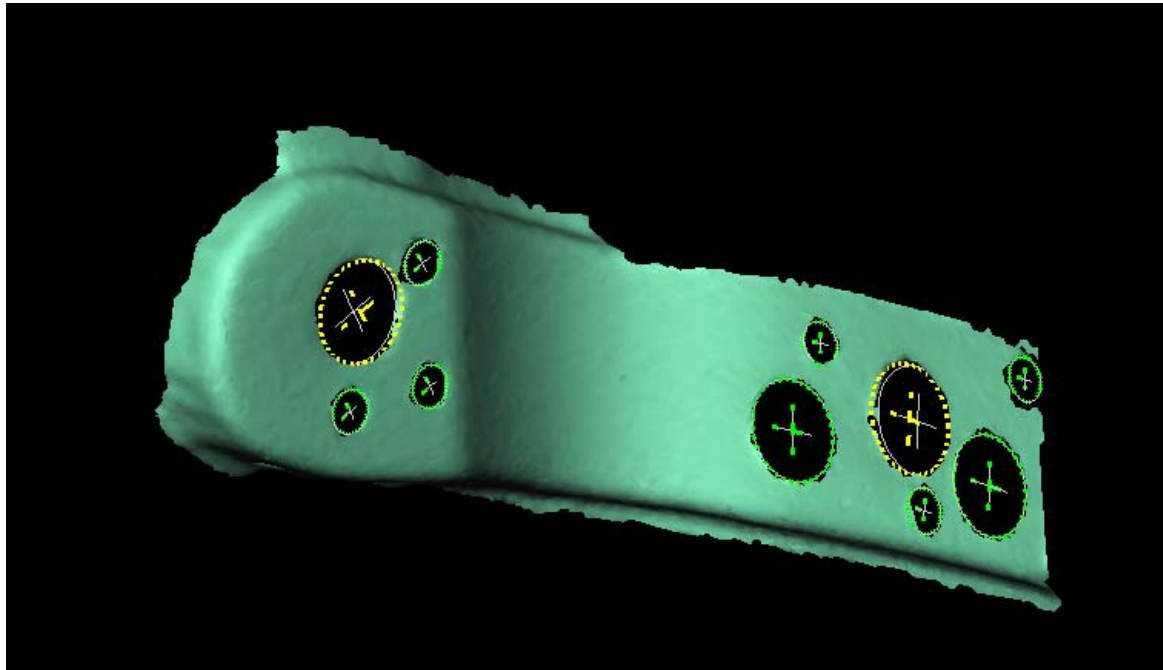
Scan Data of Individual parts



ETCS

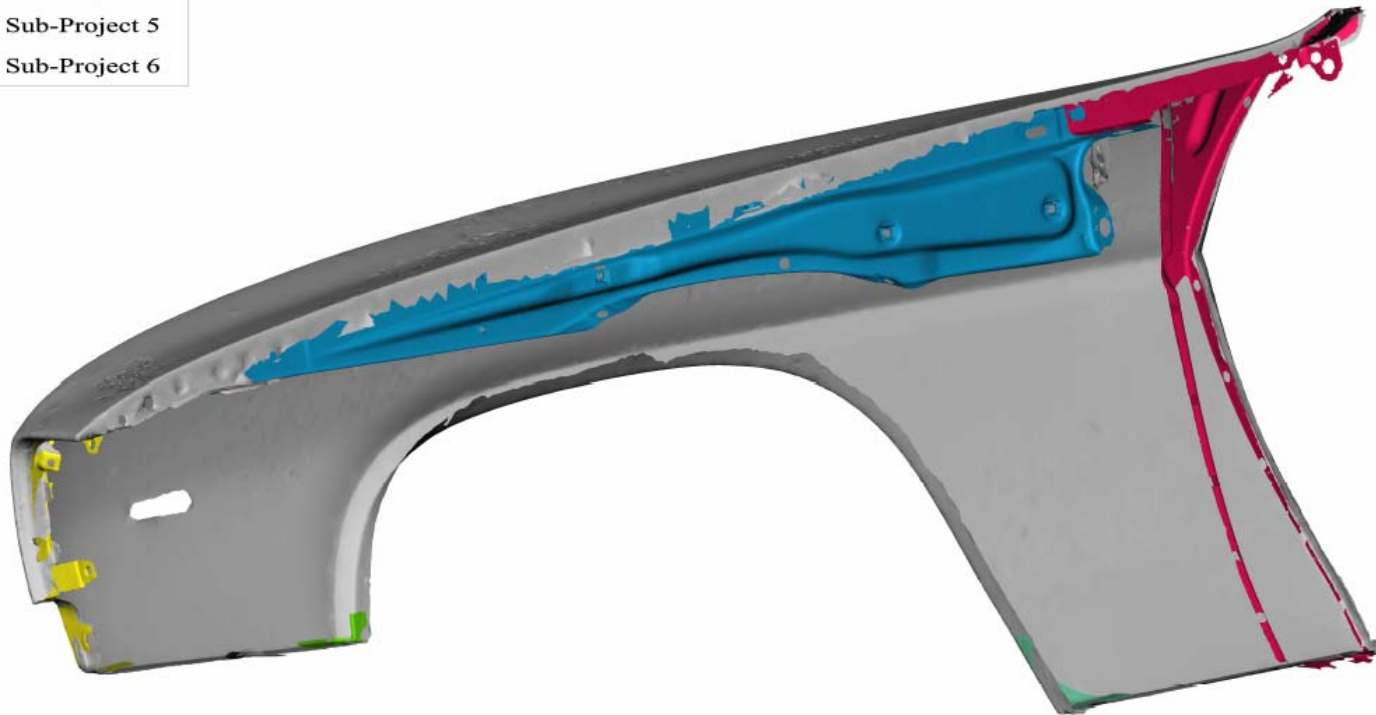
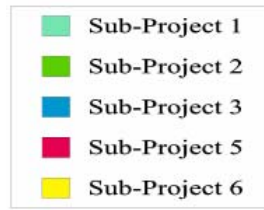
Feature detection

Holes, Slots and Edge points can be measured directly from part for alignment.



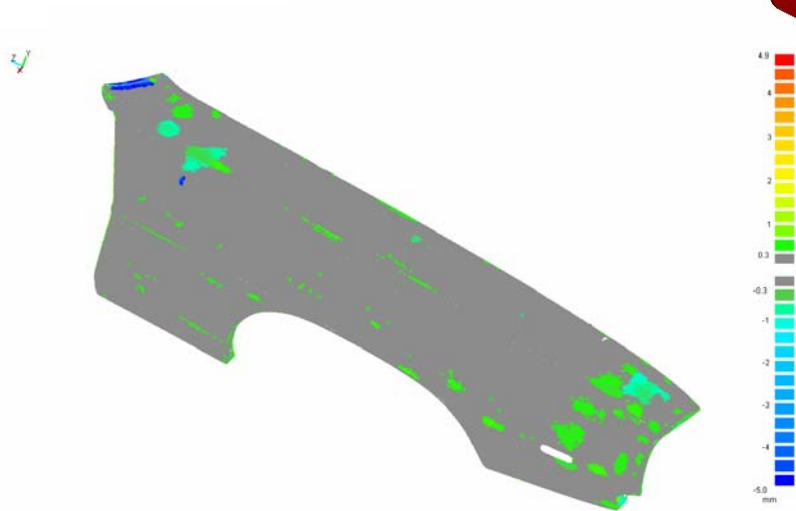
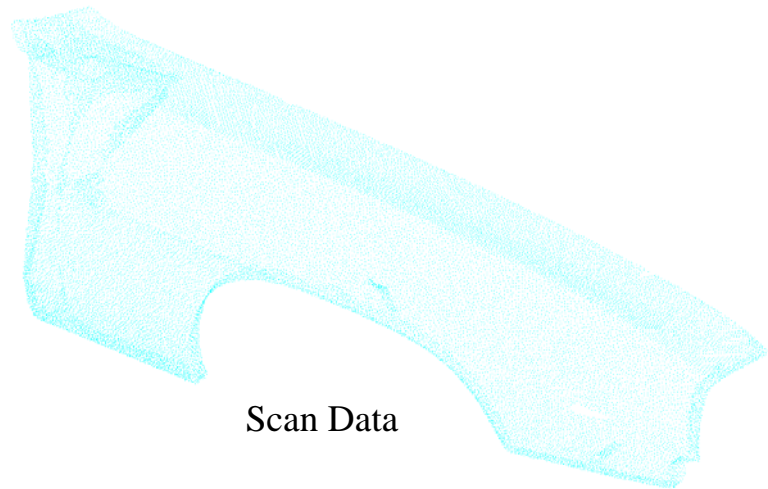
Digital Assembly of Scan data

- Hidden flanges mating area scan data captured using this process



Y

Individual part Scan to surface model process



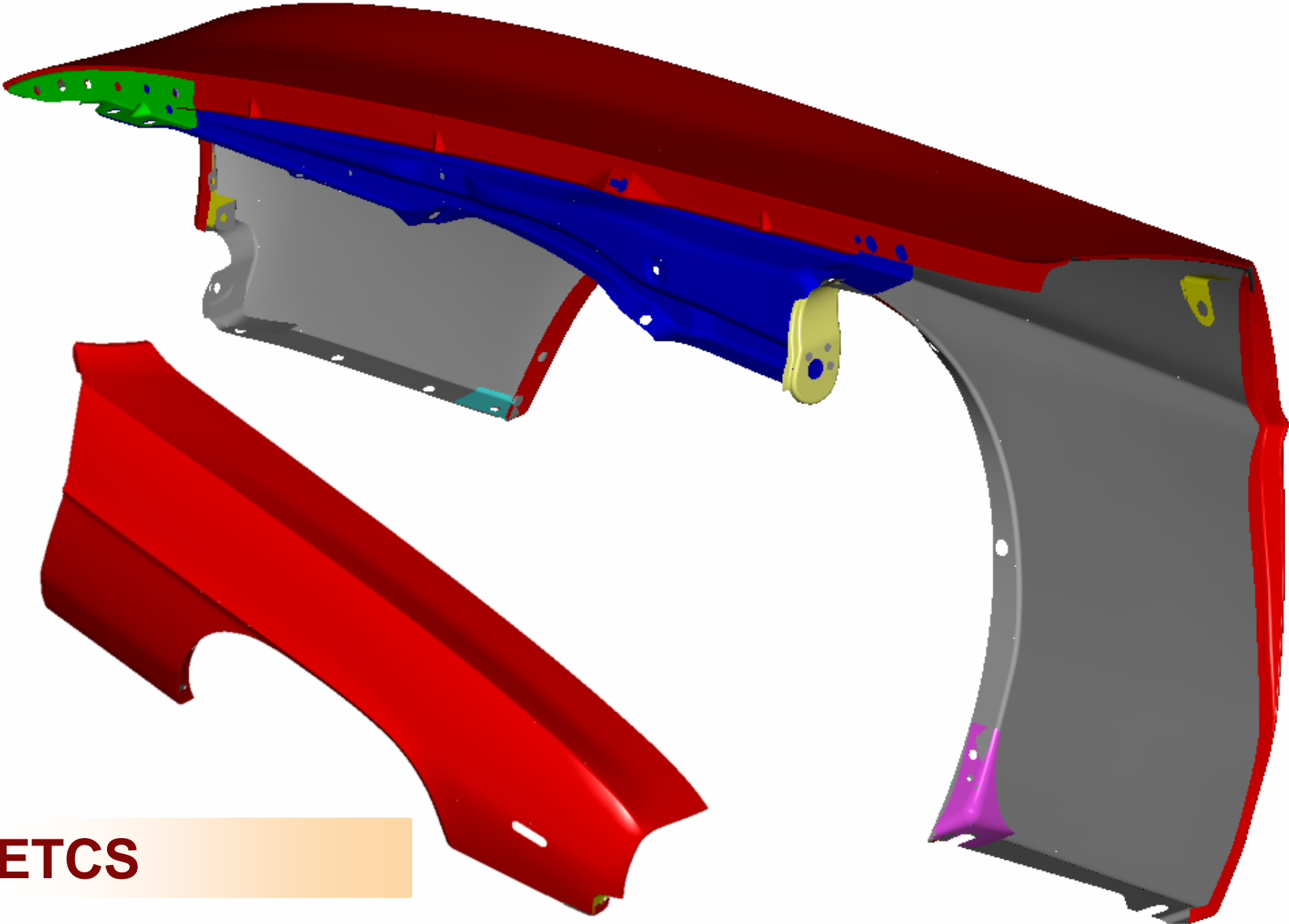
ETCS

Surface Model of Individual parts



ETCS

Final surface model of Assembly in Body position



ETCS