
**ETCS Reverse Engineering
Case Study 2:
34 Ford Roadster**



ETCS

Reverse Engineering Scanning Process

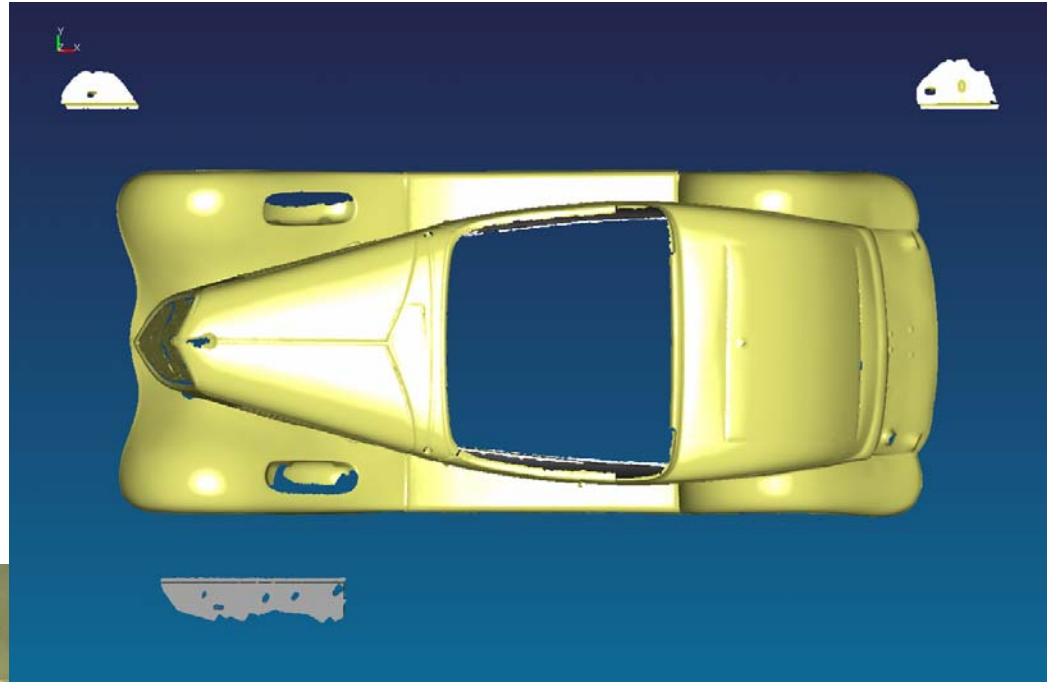
- Scanning of Assembly & individual parts
- Digital assembly of scan data in assembled position.
- Surface modeling from individual scans in Body (assembled) position.
- Translation of final model customer CAD system: CATIA V4/V5, UG, ProE Etc.

34 Ford Roadster



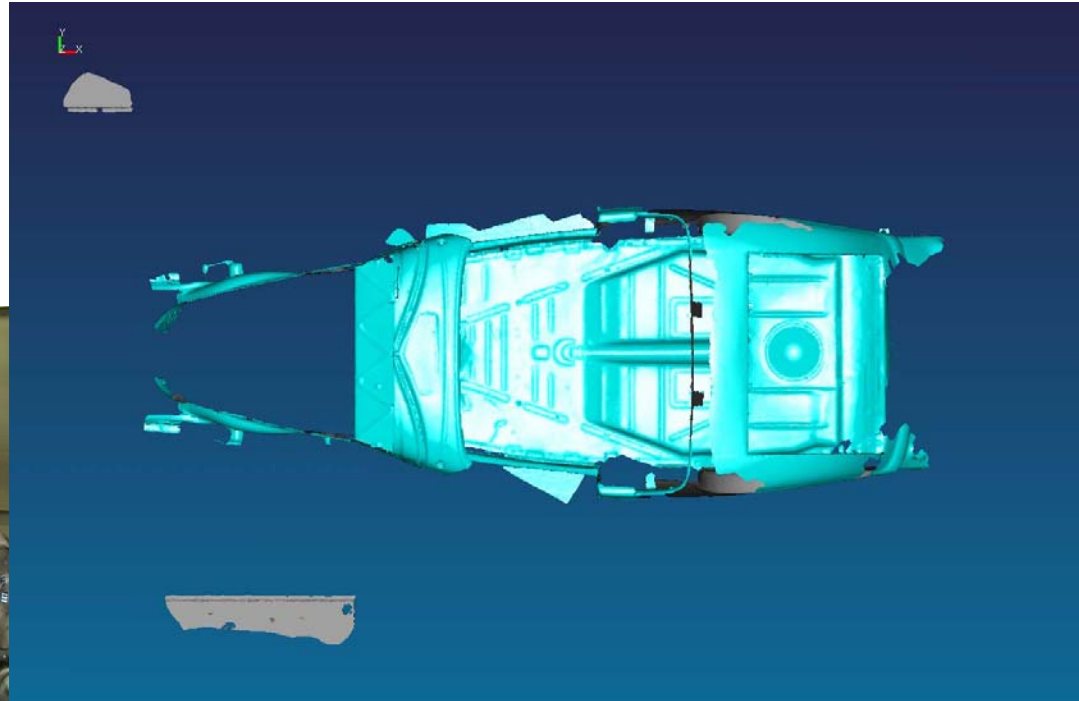
ETCS

Outside body scan- Convertible

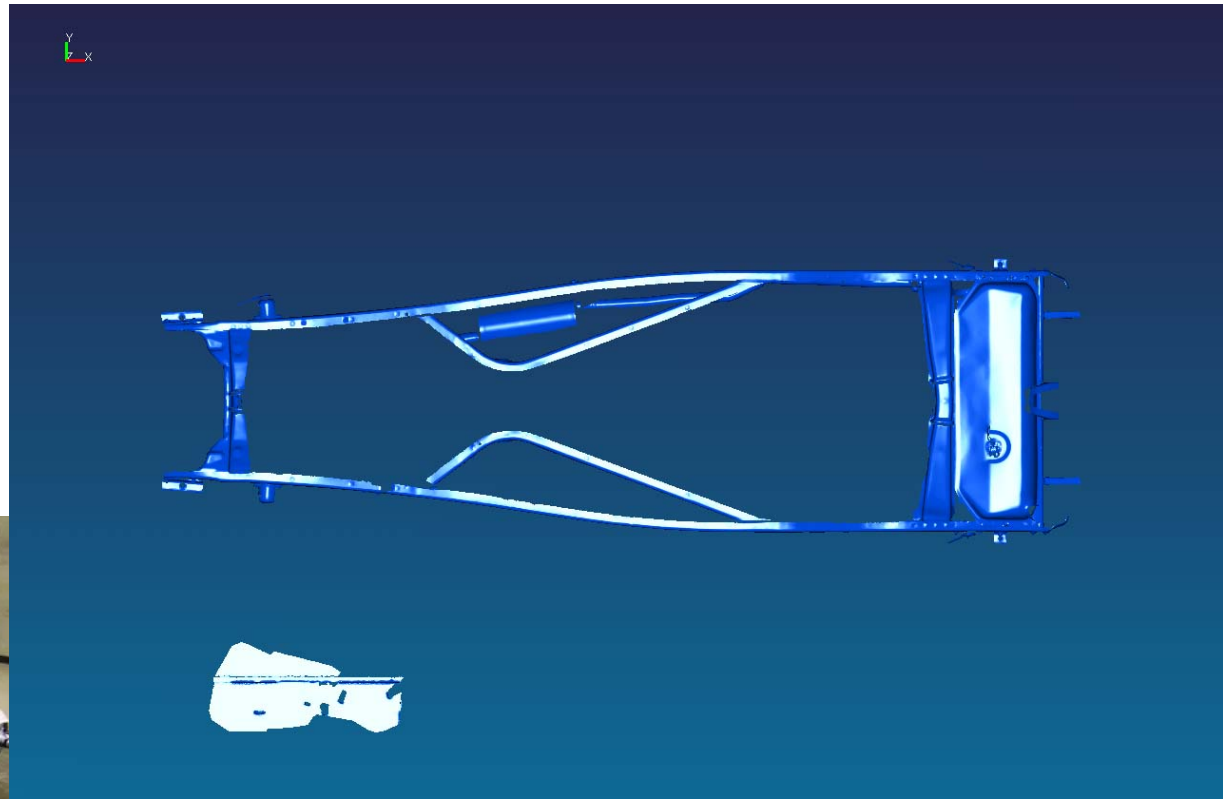


ETCS

Inside Body scan



Frame scan data

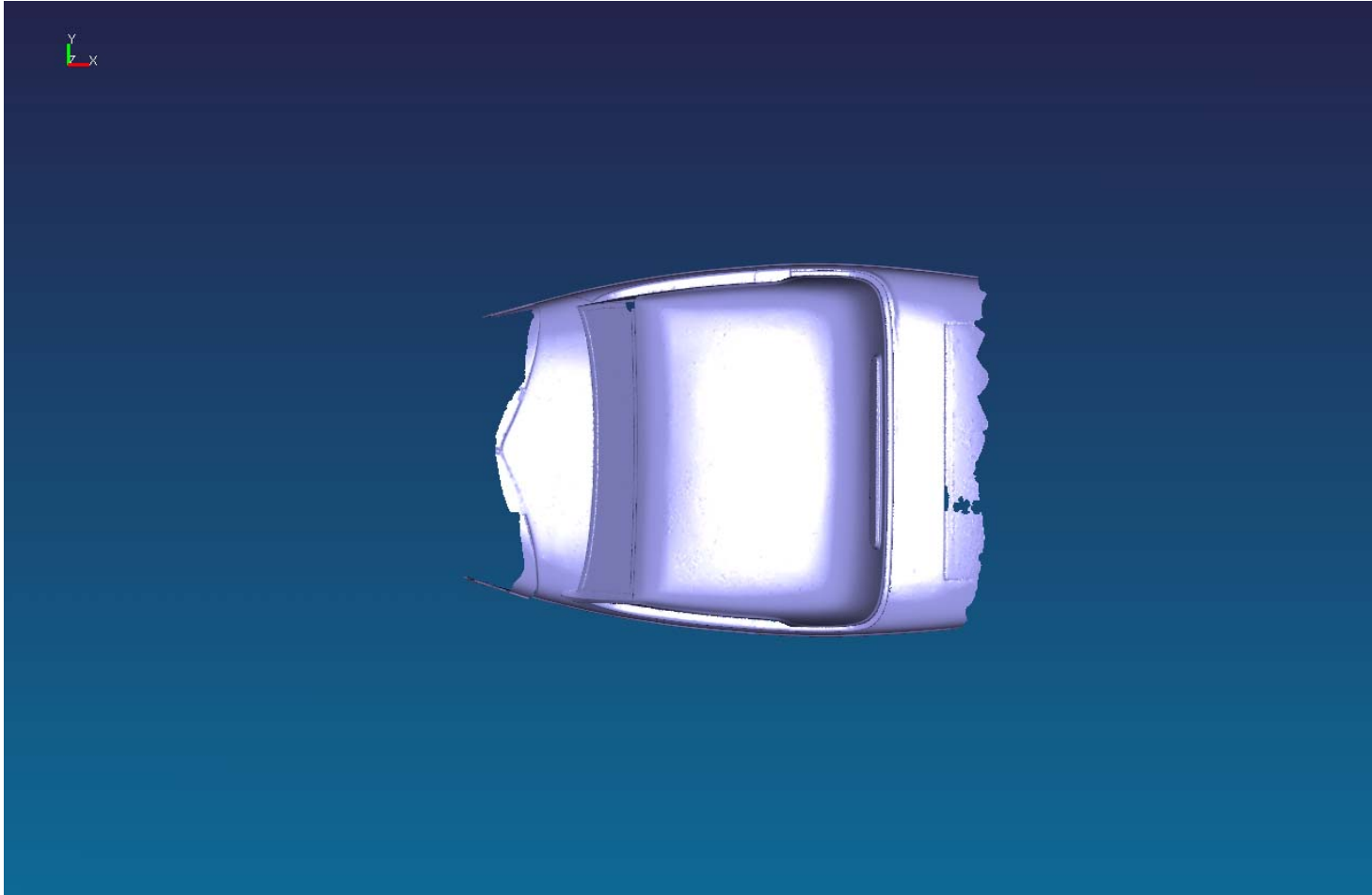


ETCS

6710 Sterling Dr N, Sterling Heights, Mi 48312

Hardtop scan data

- Scan of hard-top clay model aligned to convertible surface data

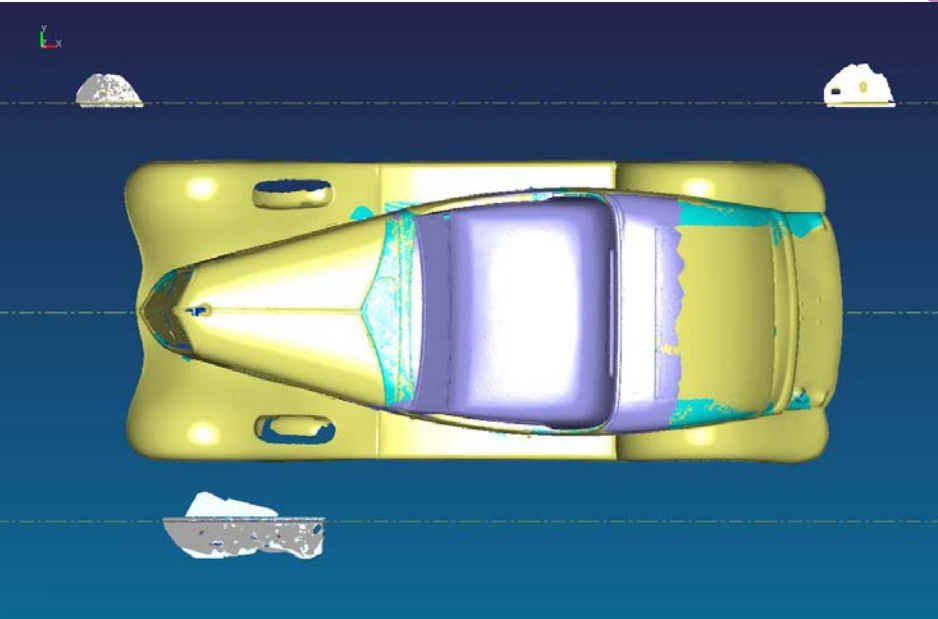
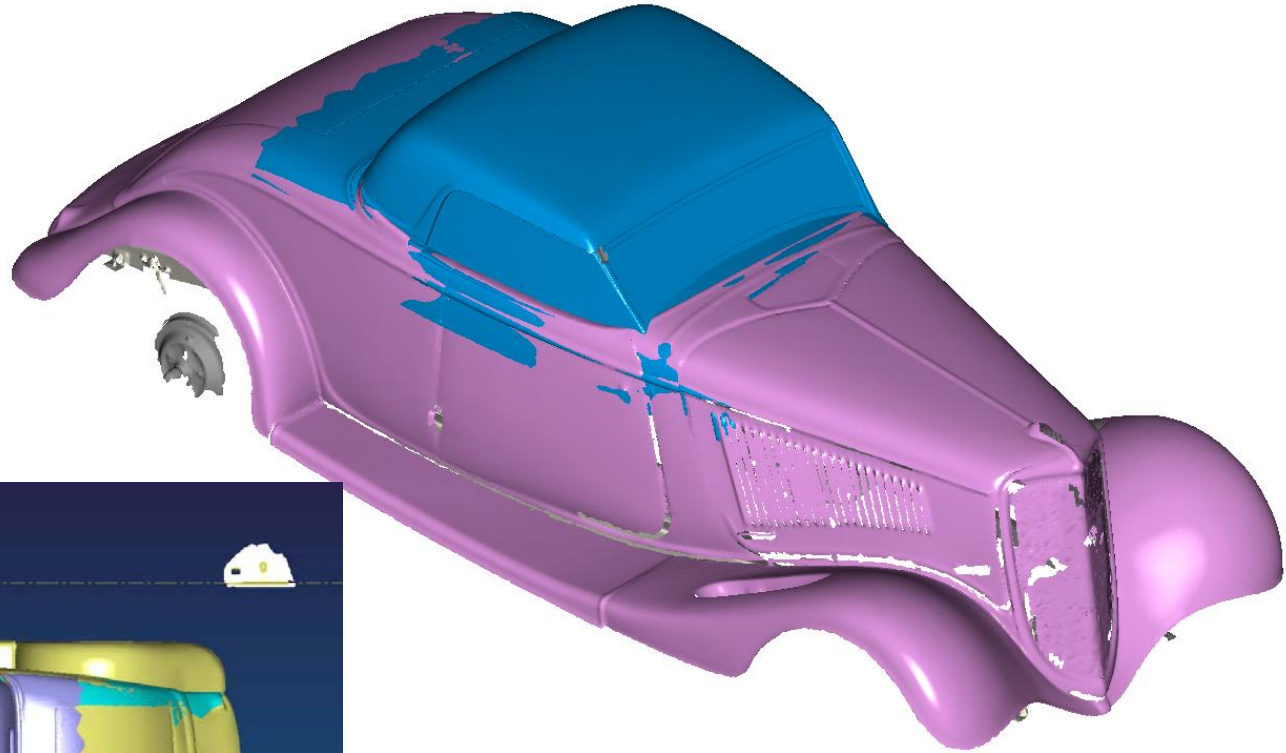


Capturing flange/mounting areas of fender attachment



Fenders were scanned separately to capture inner details like flanges etc.

Complete scan data in body position



6710 Sterling Dr N, Sterling Heights, Mi 48312

Surface Data of hard top

Hard top clay model was scanned separately and blended to convertible main body

